

NCSIMUL Automation

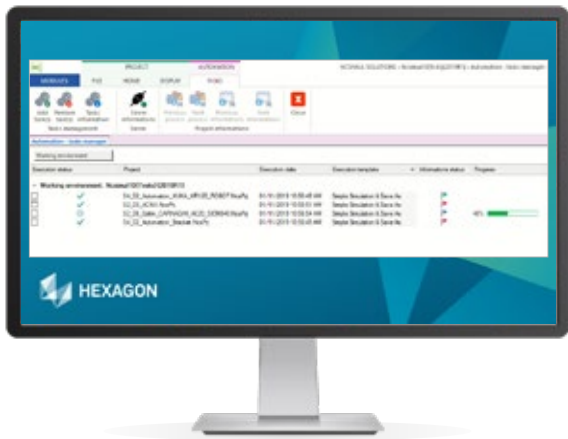
Software that handles the drudgery for you

The work of a CNC programmer entails creating new programs and improving existing programs. In cases where modifications or improvements are required, programmers often use a variety of software to perform single tasks until new programs are produced. With automation, mundane tasks are performed automatically and safe programs are more quickly delivered to the shop floor.

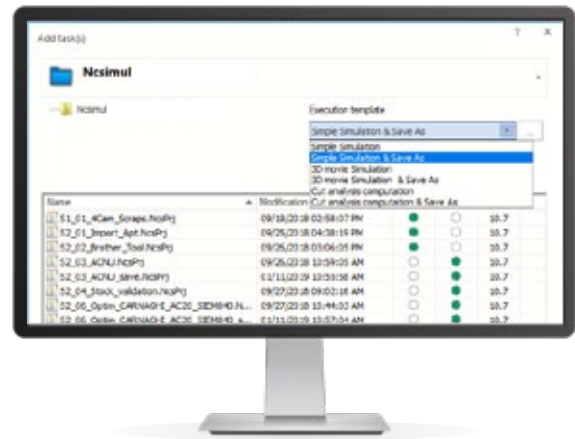
The primary benefits of operations automation are:

- Increasing productivity
- Ensuring high availability
- Increasing reliability
- Optimising performance
- Reducing operational cost





NCSIMUL Automation: Execution dashboard



NCSIMUL Automation: Task manager

Increasing productivity

The server receives tasks from all clients and schedules them according to the user's preferred timeframe. The automation dashboard displays the status of each task done without error, done with errors, and in progress. Each time a task changes status, a notification (scheduled, in progress, done) is sent to the end-user. This eliminates wasted time and, when a task is done, the end user has access to a global report and errors list.

Optimising performance

Checking 100% of program modifications is critical, as one simple modification can cause severe damage to a CNC machine. Verification is started with just a few clicks, and other production tasks can then be performed while waiting for a notification that the resulting report is complete.

Reducing operational cost

With automation, you can use your licenses 24 hours a day, seven days a week. Automation of the simulation can be integrated into your own automation process, and we can help you to integrate the simulation process into your complete chain-through-xml connectors and API.

For more information on how NCSIMUL can support your business, email us at info.ps.mi@hexagon.com

Visit www.ncsimul.com

Increasing reliability

For each submission to the server, the user chooses a command template to apply to the selected project. This template contains a list of parameters to use and a list of commands to execute for the project. This template can be customised to implement customer rules, which ensures that the same checks are performed for all projects.

Ensuring high availability

The automation server analyses each task to determine which licenses are needed to perform each job. Before scheduling a task, it checks for availability of licenses and takes into account the remaining reserve of licenses defined for interactive sessions. With this smart management, use of automation never results in users being blocked due to a lack of license. Even if you have one license, you can still use automation, as the server will start automatically after the user leaves an interactive session (for instance, during lunch time or after work).